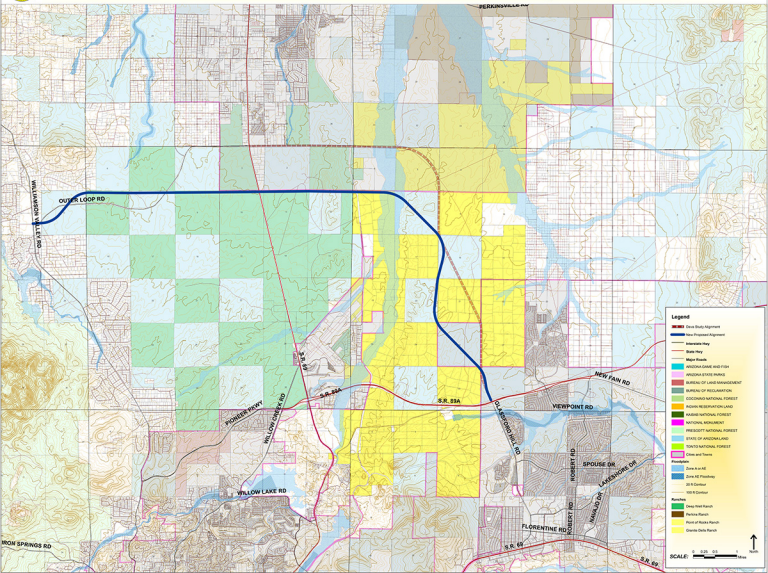




Glassford Hill Controlled Access Roadway



Legend

- Dark Study Alignment
- Non-Proposed Alignment
- Interstate Hwy
- Major Hwy
- Minor Hwy
- Major Road
- WINDY HILL WETLAND
- ARIZONA STATE PARK
- BUREAU OF LAND MANAGEMENT
- BUREAU OF RECLAMATION
- GEORGINA NATIONAL FOREST
- INDIAN RESERVATION LAND
- KANAB NATIONAL FOREST
- NATIONAL MONUMENT
- PRESIDENT NATIONAL FOREST
- STATE OF ARIZONA LAND
- TOLSON NATIONAL FOREST
- Class and Terms
- Proprietary
- Class In Use
- Class Not Planned
- SR Contour
- 100 ft Contour
- 100 ft Contour

Ownership

- Energy Trust Ranch
- Parkway Ranch
- Point of Rocks Ranch
- Gracie Oaks Ranch

SCALE: 0 0.25 0.5 1 Miles

↑