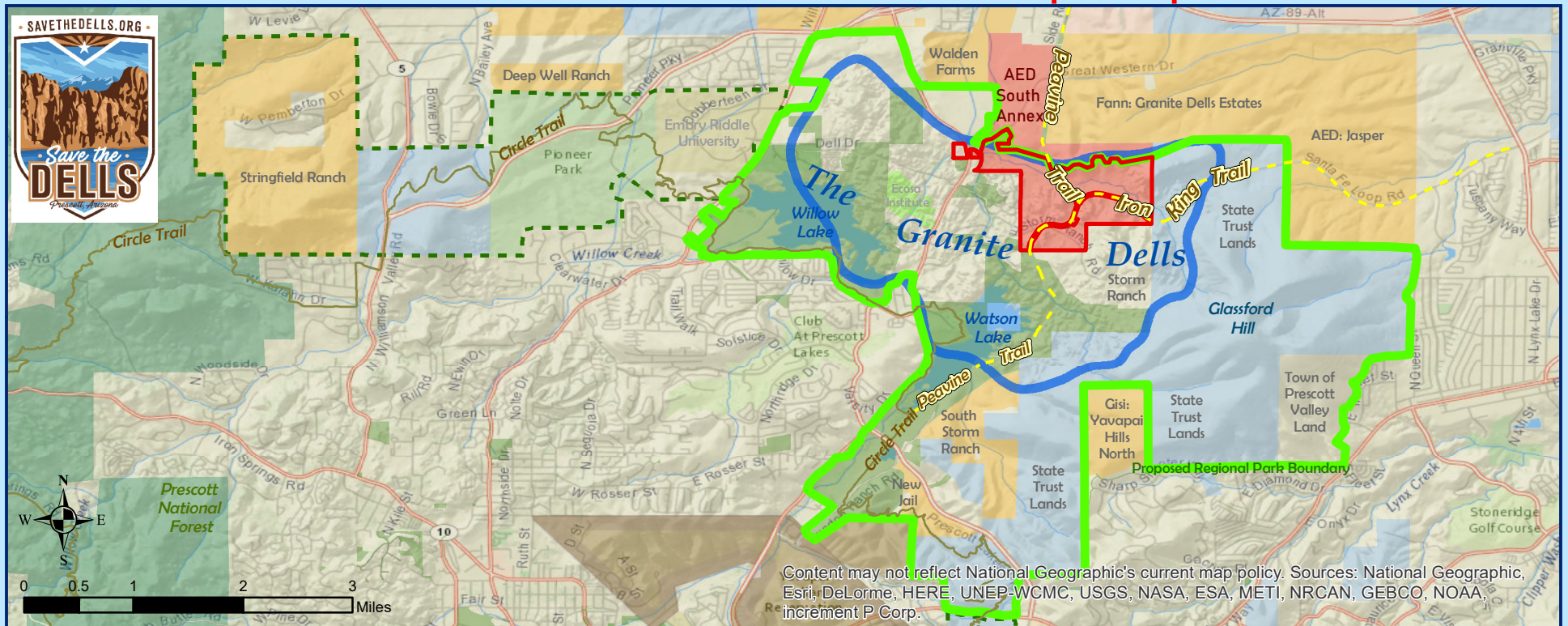


Granite Dells Regional Park and Preserve

A Proposal for People, Wildlife, and Our Communities

**We did it! 473.7 acres of
New Open Space shown in RED!**



- 473.7 Acres of New Public Open Space!
- AED Approved "South Annexation"
- Proposed Regional Park (updated 10/21)
- Prescott's Granite Dells Area
- City of Prescott Open Space
- Arizona State Trust Land
- Recently Approved Developments
- Other Az Eco Development Lands
- Wildlife and Recreation Corridor
- Yavapai Prescott Indian Tribe
- US Forest Service

Map by Joe Trudeau - Oct. 22, 2021
Paid for by the Save the Dells PAC

Many privately owned parcels on this map are within the perimeter of the proposed Regional Park. The proposed Regional Park outline is drawn in a simplified manner; not all lands within its bounds are suitable for open space. However, some parcels contain significant undeveloped acreage that is within the geography of the Dells or contiguous to that geography. Those parcels could potentially contribute to public open space, wildlife habitat preservation, watershed protection, or provide other conservation or recreation values. Conservation may be these lands best use.

Some lands may contain homes or buildings, and others may already have planned or approved developments which have not yet broken ground. Save the Dells has no intention of restricting use of currently occupied or developed lands. Save the Dells intention is to foster dialogue about the long-term protection of certain parcels within the Park outline that have high conservation value, but not to make any attempt to acquire property forcefully or without just compensation.